

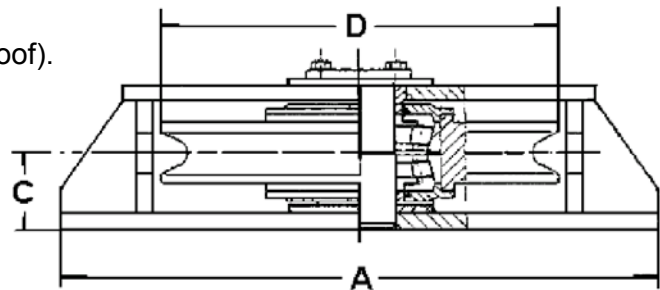
DECK SHEAVE FAIRLEAD

DECK SHEAVE FAIRLEAD – MODEL : BD – 46 (HORIZONTAL TYPE)

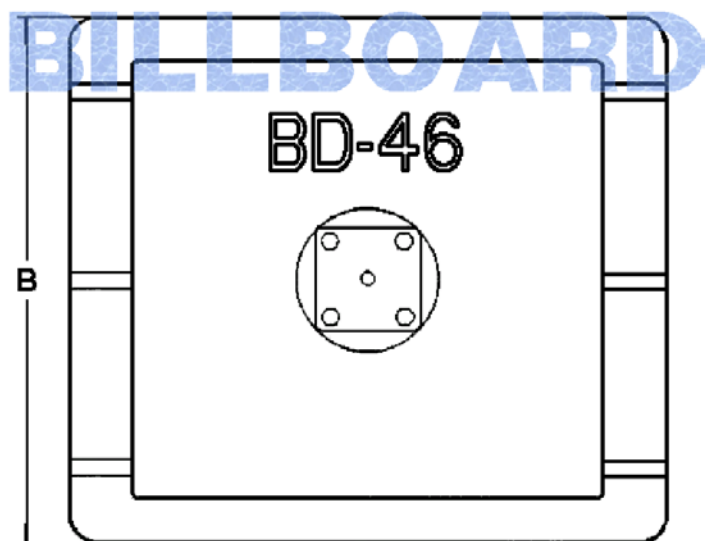
Product Code: AE-3500

Wire Size		Sheave Dia. D (mm)	Dimensions (mm)			SWL (KN)	Mass (Kgs)
(mm)	(Inch)		A	B	C		
25	1	406	580	580	92	234	176
32	1 – 1/4	508	690	690	92	355	270
38	1 – 1/2	610	820	800	120	500	400
45	1 – 3/4	660	845	845	127	671	550
52	2	762	1143	1143	165	935	890
64	2 – 1/2	914	1130	1130	191	1414	1300

- Remark :
1. Build to withstand breaking strength of indicated rope at 90° sheave wrap on sheave.
 2. Wrap angle 90° ~ 180°.
 3. Sealed roller bearing.
 4. Option : a. with Load pin (Exd Proof).
 b. with Horizontal Roller.
 5. For Offshore purpose.



BD-46



BD-46 Single Sheave



BD-48 Double Sheave

