

# CAPSTAN

Capstan is mounted in vertical position on the deck. The warping head is driven by an electric or hydraulic motor. The torque-transmitting gear is housed in the warping head and the motor is located below deck. The necessary capacity results of the nominal rope pull and the related rope speed.

Upon special request, the motor can be completely housed in the warping head.

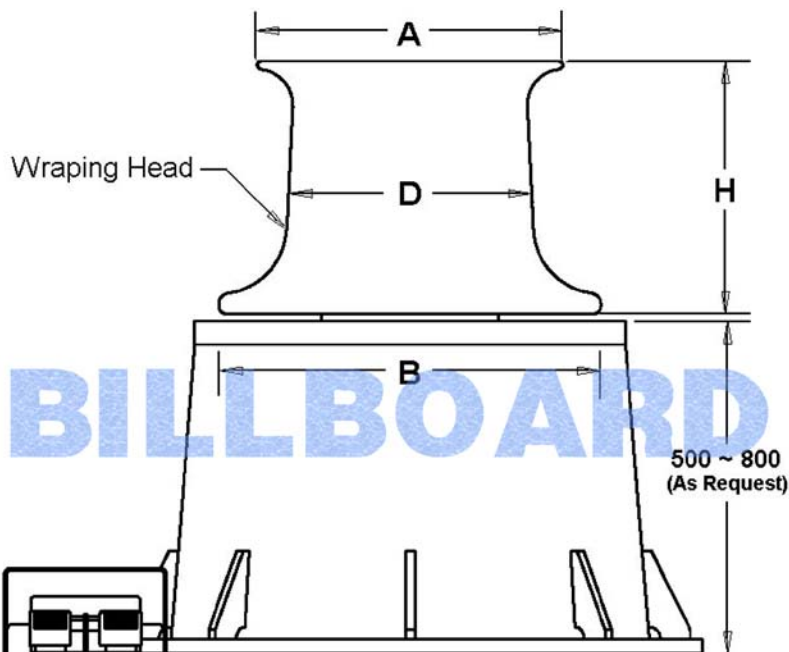
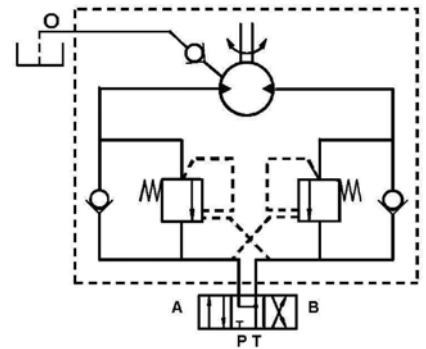
Pull Load (Ton)	Warping Head Dia. D (mm)	Line Speed (M/min)	Line Size Dia. (mm)		Dimension (mm)			Power (KW)	
			Wire Rope	Hawser Synthetic Rope	H	A	B	Hydraulic Driven	Electric Driven
1	250	18	14	30	250	320	370	4	5.5
2	300	15	16	36	300	400	450	5.5	7.5
3	350	12	20	42	360	440	480	7.5	11
5	410	12	25	50	430	530	622	11	15
8	530	10	32	65	445	670	800	15	22
10/12	630	10	38	78	530	800	950	22	30
15	720	8	44	90	640	944	1120	30	37
20/25	810	8	50	100	730	1060	1310	37	55

Remark : Warping Head ISO-6482.  
Base Height approx. 500 ~ 800mm (as request).

### Hydraulic Driven (CH)

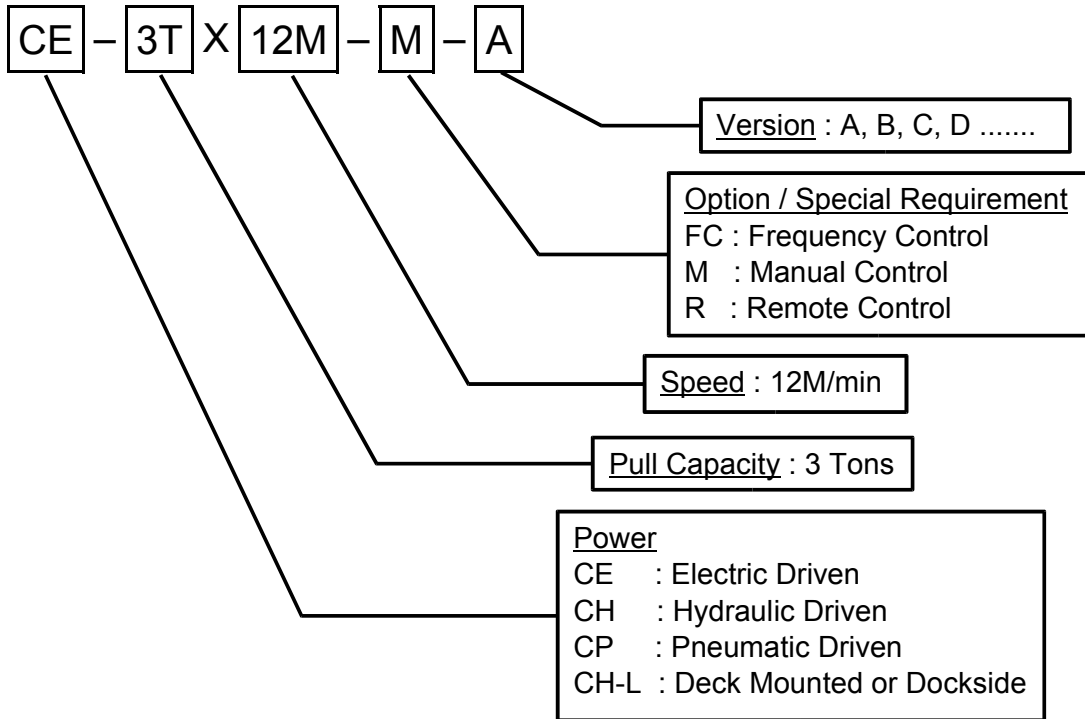
1. Hydraulic Motor with Counter Balance Valve.
2. Planetary Gear Box.
3. Control : Foot Pedal, Joystick or Remote Control.
4. Bi-Direction with Emergency Stop.
5. Option : Variable Speed.
6. Hydraulic Power Unit (as request).

### Hydraulic Schematic Diagram



**CAPSTAN**

**ARRANGEMENT**



Electric Driven (CE, CE-L)

1. Electric Magnetic Disc Brake – Failsafe.
2. Electric Motor : IP 56 or Ex
3. Planetary Gear Box.
4. Control : Foot Pedal, Joystick or Remote Control.
5. Bi-Direction with Emergency Stop.
6. Option : Variable Speed by Frequency Inverter Control.

**CP-5TX10M**



**CE-L-10TX25M-M**



**BillBoard Engineering Co. Ltd.**

Room 1106, Entrepot Centre, 117 How Ming Street, Kwun Tong, Hong Kong.  
 Tel. No. (852) 2797 3972      Web Site : [http : // www.billboard.com.hk](http://www.billboard.com.hk)  
 Fax No. (852) 2304 7011      E-mail : [emil@bbeng.com](mailto:emil@bbeng.com)

