

DOCKSIDE MOORING BOLLARD

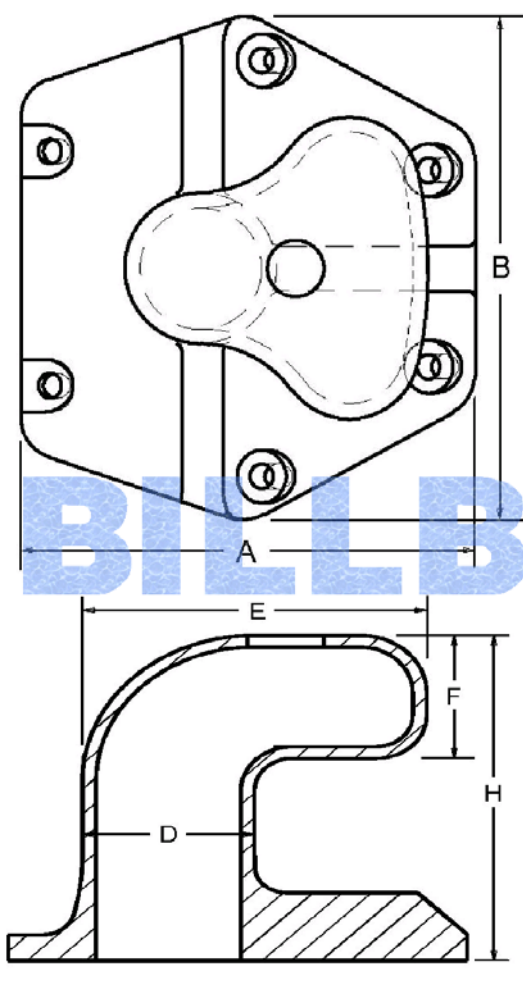
DOCKSIDE BOLLARD – BT TYPE

Product Code : AE-1007

Nominal Size (Ton)	Dimension (mm)								No. of Bolts	Pull Load (Ton)
	A	B	C	D	E	F	G	H		
10	380	427	285	144	285	120	25	320	6 X M20	10
25	640	640	500	250	500	200	40	600	6 X M36	25
35	720	820	600	300	600	240	65	700	6 X M36	35
50	840	934	700	350	700	280	65	780	6 X M48	50
75	1067	1224	750	400	750	300	75	885	6 X M52	75
100	1200	1350	900	450	900	380	80	1005	6 X M64	100
150	1480	1480	935	550	935	439	110	1200	8 X M64	150

- Remark: 1. MBL of Bollard = 3 x Pull Load; Proof Load = 1.5 x Pull Load.
 2. Can be supplied in cast iron, spheroidal graphite iron and cast steel to International Standards.
 3. The location of holes for fastening shall conform so accurately with the dimensions shown as to insure interchangeability of bollards without structural alterations.
 4. Supplied with a hole in the top to facilitate filling with grout and would be recommend this practice.
 5. Use of break off bolts has been introduced for Bollard anchorage and whilst increasing the cost of anchorage system, more advantages when usage.
 6. Operating at angles from horizontal to 30° above, and are if 180° with 3 safety factor.
 7. Installation drawing available as request.

BT Type



BILLBOARD